

## ***DATA SHEET COMPRESSOR CM 40 BAR***



**MEDIUM PRESSURE COMPRESSOR CM 40 BAR**

**TECHNICAL DATA FOR COMPRESSOR BLOCK:**

GAS ALLOWED:	AIR
NOMINAL PRESSURE MAX:	40 BAR
WORKING PRESSURE:	10 to 40 BAR adjustable by electronic panel
CAPACITY:	Refer Fig. 1b
NUMBER OF COMPRESSION STAGE:	2
NUMBER OF CYLINDERS:	3
INTAKE TEMPERATURE:	-10 to +40 °C
AMBIENT TEMPERATURE:	-15 to + 45 °C

Fig. 1a

**PERFORMANCE DATA OUTLET FOR COMPRESSOR BLOCK :**

TYPE \ OUTLET BAR	unit	10	20	30	40
<b>CM44072809</b> 2,2kW	l/min	123	117	113	109
	m3/h	7.4	7	6.8	6.6
<b>CM44082809</b> 2,5kW	l/min	188	177	169	162
	m3/h	11.3	10.6	10.1	9.7
<b>CM44082812</b> 2,8kW	l/min	255	241	229	220
	m3/h	15.3	14.5	13.7	13.2
<b>CM44082815</b> 3kW	l/min	310	293	278	267
	m3/h	18.6	17.6	16.7	16
<b>CM44093215</b> 5kW	l/min	370	353	340	329
	m3/h	22.2	21.2	20.4	19.7
<b>CM45113209</b> 7kW	l/min	450	428	410	396
	m3/h	27	25.7	24.6	23.8
<b>CM45113212</b> 8kW	l/min	553	528	512	500
	m3/h	33.2	31.7	30.7	30
<b>CM45113215</b> 9kW	l/min	690	665	647	635
	m3/h	41.4	39.9	38.8	38.1

ATTENTION: FLOW +/- 5%

Fig. 1b

**TECHNICAL DATA FOR PRIME MOVER:**

VOLTAGE:	230/400 (+/- 10%)
CERTIFICATION:	CE
TYPE:	THREE PHASE ELECTRIC
SPEED:	2940 1/min
ENCLOSURE:	IP54
FREQUENCY:	50Hz (60Hz)
ENERGY EFFICIENCY:	IE 3
OPTIONAL:	SOFT-START

**COMPRESSOR BLOCK:**

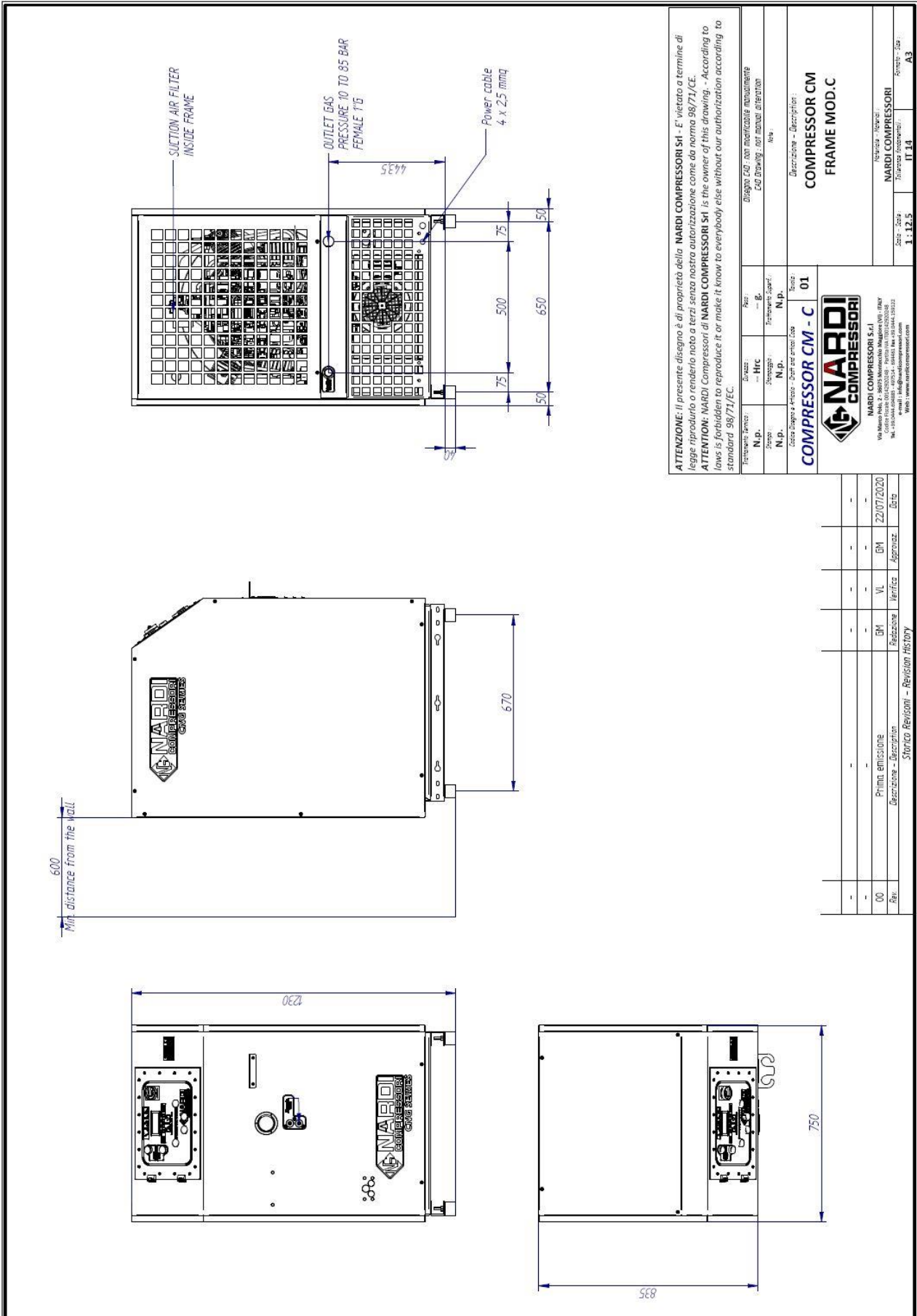
- Oil pump for force feed lubrication with oil filter
- Oil capacity: 3,5 lt.
- Air cooled after each stage
- Final pressure safety valve
- Fill of oil
- Final pressure gauge
- Automatic level oil alarm
- No return valve outlet

**COMPRESSOR UNIT:**

- Compressor with vertical rear cooling air intake and hot air outlet from the back
- Not for exposure to the sun and weather
- Frame mounted on anti-vibration system
- Frame soundproofed with sound-absorbent (model C - M)
- Control panel with integrated electronic
- Color Gray RAL 7016
- Outlet with no return valve
- Outlet connection G1" F

**ELECTRONIC CONTROL PANEL:**

- Easy to use and programming
- Illuminated display with hour meter, differential pressure and maximum pressure set
- Equipped with safety alarms
- AUTOMATIC mode or MANUAL, for the automated storage of gas or for a single use
- Possibility of controlling stage temperatures
- Motor protection fuses
- Ability to integrate soft-start
- START and STOP button (with green led for run)
- Alarm service when needed
- Possible setting ° C / ° F
- Possibile setting Bar, MPa, Psi
- Pressure control input and output
- Checking the oil level automatic
- Easy setting of maximum and minimum pressure of work
- Possibility of remote control
- Free voltage contact for signal the RUN status
- Free voltage contact for signal the General Alarm



ATTENZIONE: Il presente disegno è di proprietà della NARDI COMPRESSORI S.p.A. - È vietato a termine di legge riprodurlo o renderlo noto a terzi senza autorizzazione come da norma 98/71/CE.

ATTENTION: NARDI Compressori di NARDI COMPRESSORI S.p.A. is the owner of this drawing. - According to laws is forbidden to reproduce it or make it know to everybody else without our authorization according to standard 98/71/CE.

Disegno CAD: non modificabile manualmente  
 CAD Drawing: not manual alteration

Rev: - g -  
 Descrizione - Description:  
**COMPRESSOR CM - C 01**  
**FRAME MOD.C**

Nota: - Nota: -  
 NARDI COMPRESSORI  
 Via Museo N. 2 - 36073 Montebelluna (TV) - Italy  
 Tel. +39 0422 860000 - Fax +39 0422 860001  
 e-mail: info@nardicompressori.com  
 Web: www.nardicompressori.com

Scale: - Scala: -  
 1:12,5

Rev. - Star: -  
 IT 14 - A3

Rev.	Descrizione	Disegnato	Verificato	Approvato	Data
00	Prima emissione	GM	VL	BM	22/07/2020
	Disegnato	Disegnato	Verificato	Approvato	Data

Storico Revisioni - Revision History