

DATA SHEET BOOSTER COMPRESSOR

CB 80 BAR



MEDIUM PRESSURE BOOSTER COMPRESSOR CB 80 BAR

TECHNICAL DATA FOR BOOSTER BLOCK:

GAS ALLOWED:	DRY AIR, NITROGEN, INERT GAS
NOMINAL PRESSURE MAX:	80 BAR
WORKING PRESSURE:	10 to 80 BAR adjustable by electronic panel
CAPACITY:	Refer Fig. 1b
NUMBER OF COMPRESSION STAGE:	2
NUMBER OF CYLINDERS:	3
INTAKE TEMPERATURE:	-10 to +40 °C
AMBIENT TEMPERATURE:	-15 to + 45 °C

Fig. 1a

PERFORMANCE DATA OUTLET FOR BOOSTER BLOCK :

TYPE \ OUTLET BAR	unit	50	60	70	80
CB84072809 2,7kW	l/min	105	101	98	95
	m3/h	6.3	6	5.9	5.7
CB84082809 3kW	l/min	156	151	147	144
	m3/h	9.4	9.1	8.8	8.6
CB84082812 3.2kW	l/min	212	206	200	196
	m3/h	12.7	12.4	12	11.8
CB84082815 3.5kW	l/min	256	250	243	239
	m3/h	15.4	15	14.6	14.4
CB84093215 5.5kW	l/min	319	314	309	305
	m3/h	19.1	18.8	18.5	18.3
CB85113209 9kW	l/min	385	375	368	364
	m3/h	23.1	22.5	22.1	21.8
CB85113212 10kW	l/min	490	482	474	468
	m3/h	29.4	28.9	28.4	28.1
CB85113215 11kW	l/min	627	620	615	612
	m3/h	37.6	37.2	36.9	36.7

ATTENTION: FLOW +/- 5%

Fig. 1b

TECHNICAL DATA FOR PRIME MOVER:

VOLTAGE:	230/400 (+/- 10%)
CERTIFICATION:	CE
TYPE:	THREE PHASE ELECTRIC
SPEED:	2940 1/min
ENCLOSURE:	IP54
FREQUENCY:	50Hz (60Hz)
ENERGY EFFICIENCY:	IE 3
OPTIONAL:	SOFT-START

SUCTION:

- Gas connection: G1" F
- Intake pressure monitored by pressure transmitter
- Shut-off solenoid valve

INLET PRESSURE:

- Inlet pressure between 50 MBar to 600 MBar
- Pressure transmitter able start, stop and alarms of max and min pressure of compressor
- If you need to install a pressure reducing valve, be sure it has a capacity equal to or bigger than 50% of booster flow capacity

BOOSTER BLOCK:

- Oil pump for force feed lubrication with oil filter
- Oil capacity: 3,5 lt.
- Air cooled after each stage
- Final pressure safety valve
- Fill of oil
- Final pressure gauge
- Automatic level oil alarm
- No return valve outlet

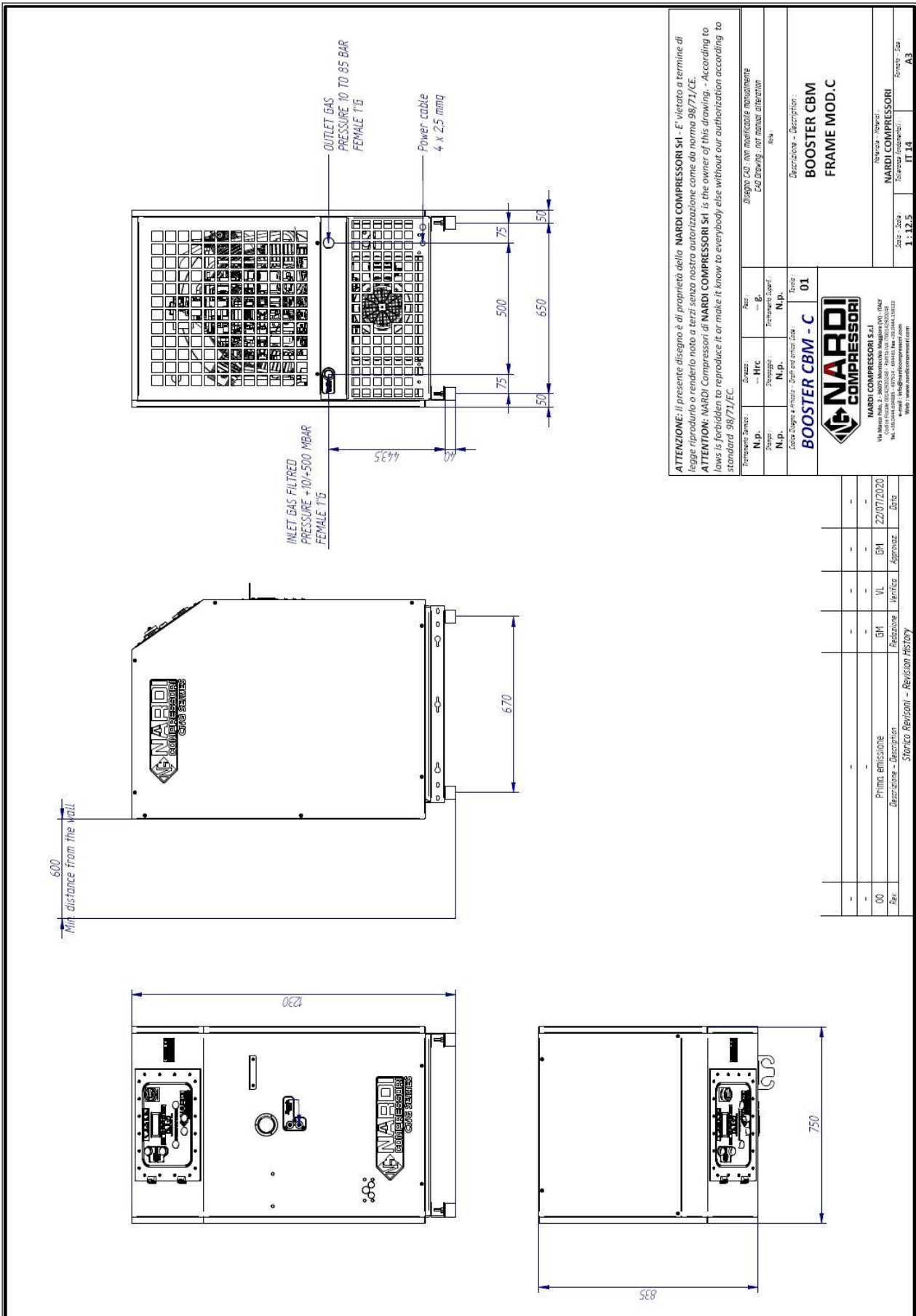
COMPRESSOR UNIT:

- Compressor with vertical rear cooling air intake and hot air outlet from the back
- Not for exposure to the sun and weather
- Frame mounted on anti-vibration system
- Frame soundproofed with sound-absorbent (model C - M)
- Control panel with integrated electronic
- Color Gray RAL 7016
- Outlet with no return valve
- Outlet connection G1" F

ELECTRONIC CONTROL PANEL:

- Easy to use and programming
- Illuminated display with hour meter, differential pressure and maximum pressure set
- Equipped with safety alarms
- AUTOMATIC mode or MANUAL, for the automated storage of gas or for a single use
- Possibility of controlling stage temperatures
- Motor protection fuses
- Ability to integrate soft-start
- START and STOP button (with green led for run)
- Alarm service when needed

- Possible setting ° C / ° F
- Possibile setting Bar, MPa, Psi
- Pressure control input and output
- Checking the oil level automatic
- Easy setting of maximum and minimum pressure of work
- Possibility of remote control
- Free voltage contact for signal the RUN status
- Free voltage contact for signal the General Alarm



ATTENZIONE: il presente disegno è di proprietà della NARDI COMPRESSORI SH - E' vietato a termine di legge riprodurlo o renderlo noto a terzi senza nostra autorizzazione come da norma 98/71/CE.
ATTENTION: NARDI Compressori di NARDI COMPRESSORI SH is the owner of this drawing. - According to laws is forbidden to reproduce it or make it known to everybody else without our authorization according to standard 98/71/CE.

Disegno CAD non modificabile manualmente CAD Drawing not manually alterable	Disegno: - HRC - N.P.	Rev.: - B - N.P.	Terminato dall'ing.: - N.P.	Disegno: - N.P.	Descrizione - Description: BOOSTER CBM - C FRAME MOD.C
<p>Disegno a misura - Draw size: A3</p> <p>Scale: - Scala: 1:12.5</p> <p>Forma: - Forma: A3</p>				<p>Descrizione - Description: BOOSTER CBM FRAME MOD.C</p> <p>NARDI COMPRESSORI Terminato dall'ing.: IT 34</p>	

Rev.	Descrizione - Description	Revisore	Verifica	Approvazione	Data
00	Prima emissione	GM	VL	GM	22/07/2020

Storico Revisioni - Revision History