

DATA SHEET BOOSTER COMPRESSOR

CB 40 BAR



MEDIUM PRESSURE BOOSTER COMPRESSOR CB 40 BAR

TECHNICAL DATA FOR BOOSTER BLOCK:

GAS ALLOWED:	DRY AIR, NITROGEN, INERT GAS
NOMINAL PRESSURE MAX:	40 BAR
WORKING PRESSURE:	10 to 40 BAR adjustable by electronic panel
CAPACITY:	Refer Fig. 1b
NUMBER OF COMPRESSION STAGE:	2
NUMBER OF CYLINDERS:	3
INTAKE TEMPERATURE:	-10 to +40 °C
AMBIENT TEMPERATURE:	-15 to + 45 °C

Fig. 1a

PERFORMANCE DATA OUTLET FOR BOOSTER BLOCK :

TYPE \ OUTLET BAR	unit	10	20	30	40
CB44072809 2,2kW	l/min	123	117	113	109
	m3/h	7.4	7	6.8	6.6
CB44082809 2,5kW	l/min	188	177	169	162
	m3/h	11.3	10.6	10.1	9.7
CB44082812 2,8kW	l/min	255	241	229	220
	m3/h	15.3	14.5	13.7	13.2
CB44082815 3kW	l/min	310	293	278	267
	m3/h	18.6	17.6	16.7	16
CB44093215 5kW	l/min	370	353	340	329
	m3/h	22.2	21.2	20.4	19.7
CB45113209 7kW	l/min	450	428	410	396
	m3/h	27	25.7	24.6	23.8
CB45113212 8kW	l/min	553	528	512	500
	m3/h	33.2	31.7	30.7	30
CB45113215 9kW	l/min	690	665	647	635
	m3/h	41.4	39.9	38.8	38.1

ATTENTION: FLOW +/- 5%

Fig. 1b

TECHNICAL DATA FOR PRIME MOVER:

VOLTAGE:	230/400 (+/- 10%)
CERTIFICATION:	CE
TYPE:	THREE PHASE ELECTRIC
SPEED:	2940 1/min
ENCLOSURE:	IP54
FREQUENCY:	50Hz (60Hz)
ENERGY EFFICIENCY:	IE 3
OPTIONAL:	SOFT-START

SUCTION:

- Gas connection: G1" F
- Intake pressure monitored by pressure transmitter
- Shut-off solenoid valve

INLET PRESSURE:

- Inlet pressure between 50 MBar to 600 MBar
- Pressure transmitter able start, stop and alarms of max and min pressure of compressor
- If you need to install a pressure reducing valve, be sure it has a capacity equal to or bigger than 50% of booster flow capacity

BOOSTER BLOCK:

- Oil pump for force feed lubrication with oil filter
- Oil capacity: 3,5 lt.
- Air cooled after each stage
- Final pressure safety valve
- Fill of oil
- Final pressure gauge
- Automatic level oil alarm
- No return valve outlet

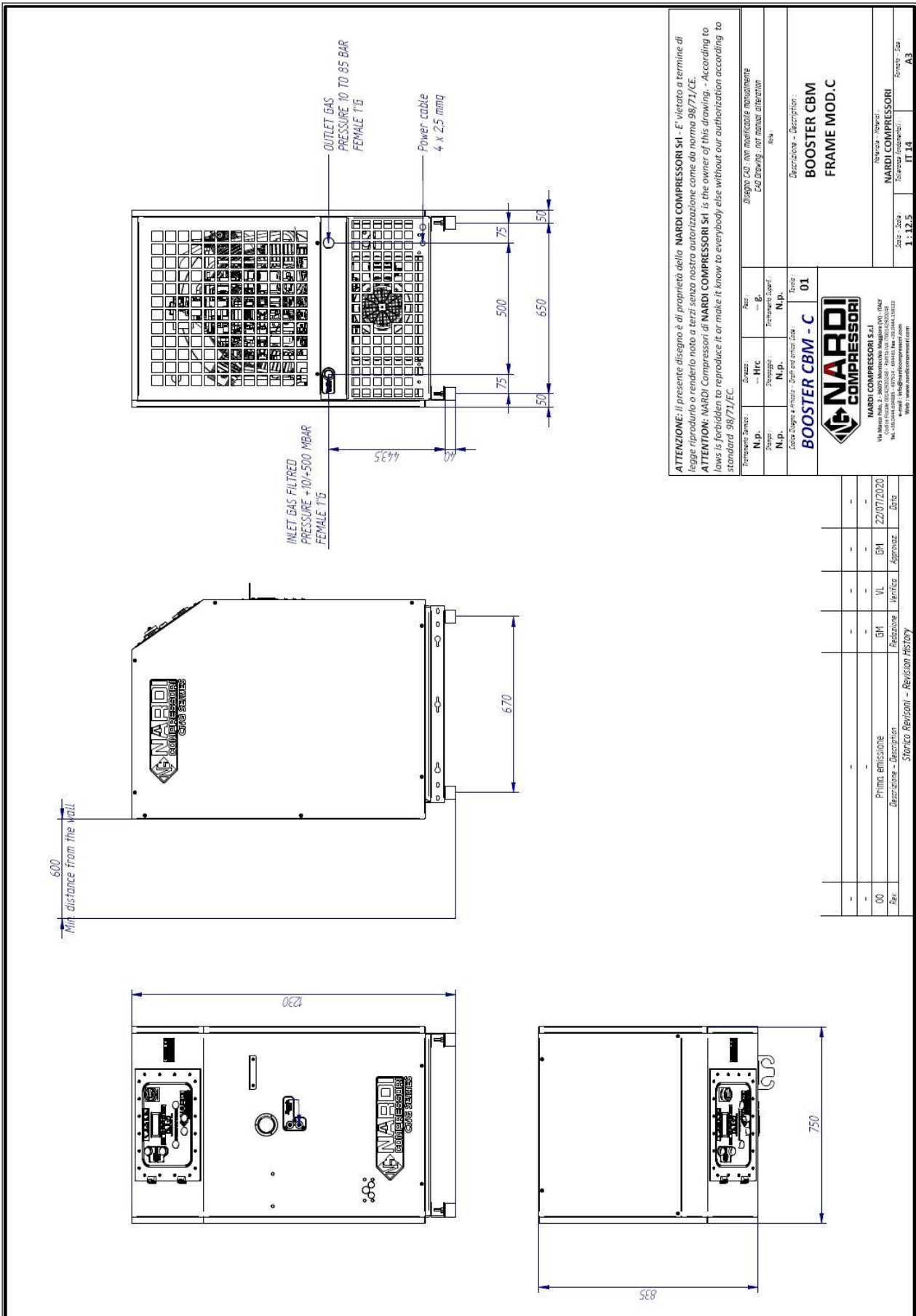
COMPRESSOR UNIT:

- Compressor with vertical rear cooling air intake and hot air outlet from the back
- Not for exposure to the sun and weather
- Frame mounted on anti-vibration system
- Frame soundproofed with sound-absorbent (model C - M)
- Control panel with integrated electronic
- Color Gray RAL 7016
- Outlet with no return valve
- Outlet connection G1" F

ELECTRONIC CONTROL PANEL:

- Easy to use and programming
- Illuminated display with hour meter, differential pressure and maximum pressure set
- Equipped with safety alarms
- AUTOMATIC mode or MANUAL, for the automated storage of gas or for a single use
- Possibility of controlling stage temperatures
- Motor protection fuses
- Ability to integrate soft-start
- START and STOP button (with green led for run)
- Alarm service when needed

- Possible setting ° C / ° F
- Possibile setting Bar, MPa, Psi
- Pressure control input and output
- Checking the oil level automatic
- Easy setting of maximum and minimum pressure of work
- Possibility of remote control
- Free voltage contact for signal the RUN status
- Free voltage contact for signal the General Alarm



ATTENZIONE: il presente disegno è di proprietà della NARDI COMPRESSORI SH - E' vietato a termine di legge riprodurlo o renderlo noto a terzi senza nostra autorizzazione come da norma 98/71/CE.
ATTENTION: NARDI Compressori di NARDI COMPRESSORI SH is the owner of this drawing. - According to laws is forbidden to reproduce it or make it know to everybody else without our authorization according to standard 98/71/CE.

Terminato bene:	N.P.	Disegno:	HRC	Aut:	B
Disegno CAD non modificabile manualmente CAD Drawing not manual alteration		Disegno:	N.P.	Terminato male:	N.P.
<p>Disegno a misura - Draw size: auto</p> <p>BOOSTER CBM - C</p> <p>01</p>					
<p>Descrizione - Description:</p> <p>BOOSTER CBM FRAME MOD.C</p>					
<p>NARDI COMPRESSORI S.p.A.</p> <p>Via Mario Pao. 2 - 36075 Montebelluna (TV) - ITALY</p> <p>Tel. +39 0422 810000 - 810001 - 810002 - 810003</p> <p>Fax +39 0422 810004</p> <p>e-mail: info@nardicompressori.com</p> <p>Web: www.nardicompressori.com</p>					
Scala - Scale:	1:12.5	Forma - Size:	IT 34	A3	

Rev.	Descrizione - Description	Revisore	Verifica	Approv.	Data
00	Prima emissione	GM	VL	GM	22/07/2020

Storico Revisioni - Revision History