

DATA SHEET BOOSTER BM 80 BAR
FOR DRY AIR, NITROGEN AND INERT GASES



MEDIUM PRESSURE BOOSTER BM 80 BAR

TECHNICAL DATA FOR BOOSTER BLOCK:

GAS ALLOWED:	DRY AIR, NITROGEN, INERT GAS
NOMINAL PRESSURE MAX:	80 BAR
WORKING PRESSURE:	10 to 80 BAR adjustable by electronic panel
CAPACITY:	Refer Fig. 1b
NUMBER OF COMPRESSION STAGE:	1
NUMBER OF CYLINDERS:	3
INTAKE TEMPERATURE:	-10 to +40 °C
AMBIENT TEMPERATURE:	-15 to + 45 °C

Fig. 1a

PERFORMANCE DATA OUTLET FOR BOOSTER BLOCK :

TYPE\INLET BAR	unit	4	5	6	7	8	9	10	11	12
BM842807 5,5kW	l/min	220	275	330	385	440	500	550	610	670
	m3/h	13	16.5	20	23	26.5	30	33	36.5	40
BM842810 5,5kW	l/min	310	390	465	545	620	700	775	850	930
	m3/h	19	23.5	28	32.5	37	42	46.5	51	56
BM843210 7,5kW	l/min	405	505	605	710	810	910	1010	1115	1215
	m3/h	24.5	30	36.5	42.5	48.5	54.5	60.5	67	73
BM853210 7,5kW	l/min	550	695	835	975	1115	1250	1390	1530	1670
	m3/h	33	42	50	58	67	75	84	92	100
BM853213 11kW	l/min	715	895	1075	1250	1430	1610	1790	1970	2150
	m3/h	43	53	65	75	85	96	107	118	129

ATTENTION: INLET FLOW IS 10% MORE THAN OUTLET FLOW

Fig. 1b

TECHNICAL DATA FOR PRIME MOVER:

VOLTAGE:	230/400 (+/- 10%)
CERTIFICATION:	CE
TYPE:	THREE PHASE ELECTRIC
SPEED:	2940 1/min
ENCLOSURE:	IP54
FREQUENCY:	50Hz (60Hz)
ENERGY EFFICIENCY:	IE 3
OPTIONAL:	SOFT-START

SUCTION:

- Gas connection: G1" F
- Intake pressure monitored by pressure transmitter
- Shut-off solenoid valve

INLET PRESSURE:

- Inlet pressure between 4 Bar to 12 Bar
- Pressure transmitter able start, stop and alarms of max and min pressure of compressor
- If you need to install a pressure reducing valve, be sure it has a capacity equal to or bigger than 50% of booster flow capacity

BOOSTER BLOCK:

- Oil pump for force feed lubrication with oil filter
- Oil capacity: 3,5 lt.
- Air cooled after each stage
- Final pressure safety valve
- Fill of oil
- Final pressure gauge
- Automatic level oil alarm
- No return valve outlet

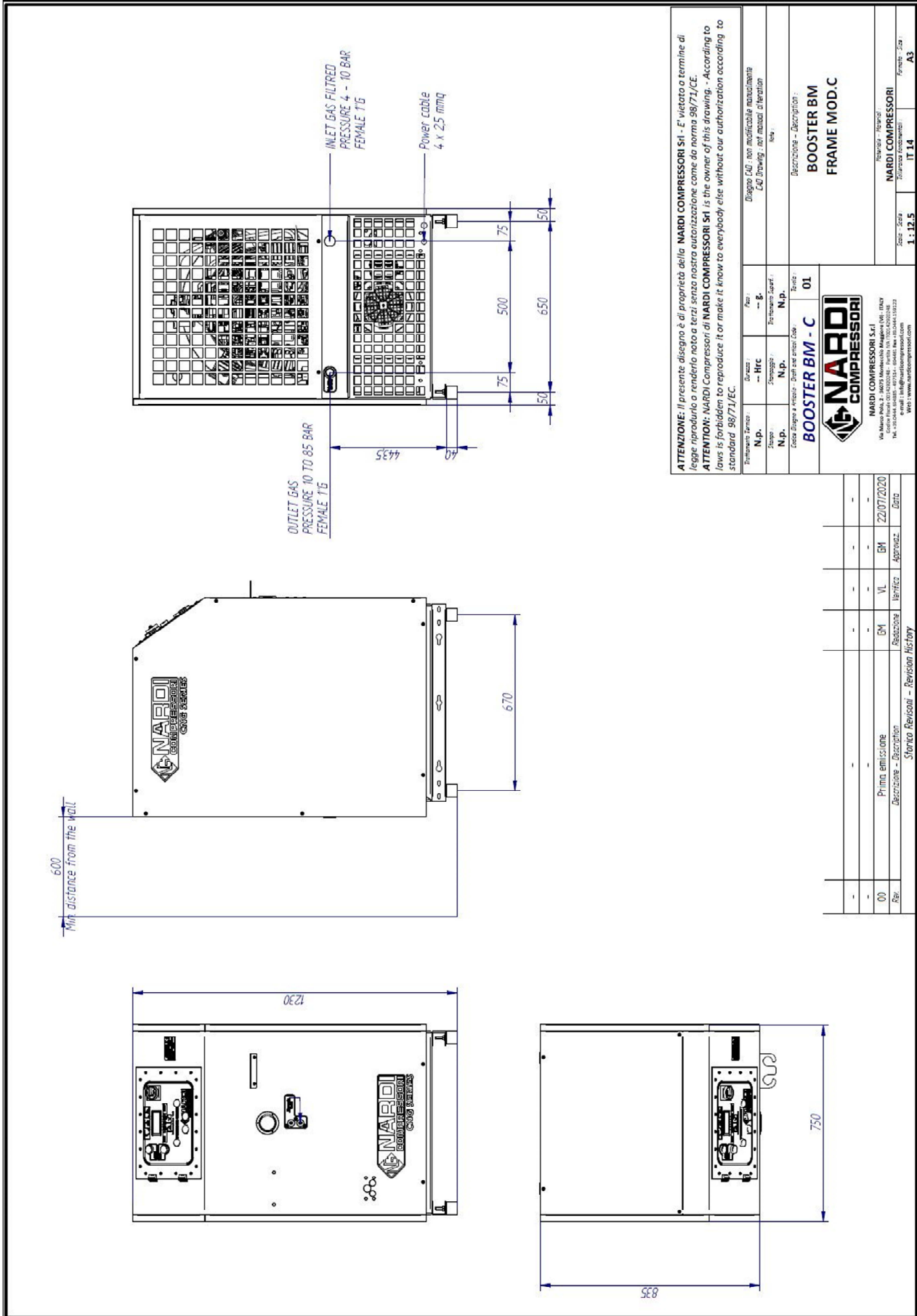
COMPRESSOR UNIT:

- Compressor with vertical rear cooling air intake and hot air outlet from the back
- Not for exposure to the sun and weather
- Frame mounted on anti-vibration system
- Frame soundproofed with sound-absorbent (model C - M)
- Control panel with integrated electronic
- Color Gray RAL 7016
- Outlet with no return valve
- Outlet connection G1" F

ELECTRONIC CONTROL PANEL:

- Easy to use and programming
- Illuminated display with hour meter, differential pressure and maximum pressure set
- Equipped with safety alarms
- AUTOMATIC mode or MANUAL, for the automated storage of gas or for a single use
- Possibility of controlling stage temperatures
- Motor protection fuses
- Ability to integrate soft-start

- START and STOP button (with green led for run)
- Alarm service when needed
- Possible setting ° C / ° F
- Possibile setting Bar, MPa, Psi
- Pressure control input and output
- Checking the oil level automatic
- Easy setting of maximum and minimum pressure of work
- Possibility of remote control
- Free voltage contact for signal the RUN status
- Free voltage contact for signal the General Alarm



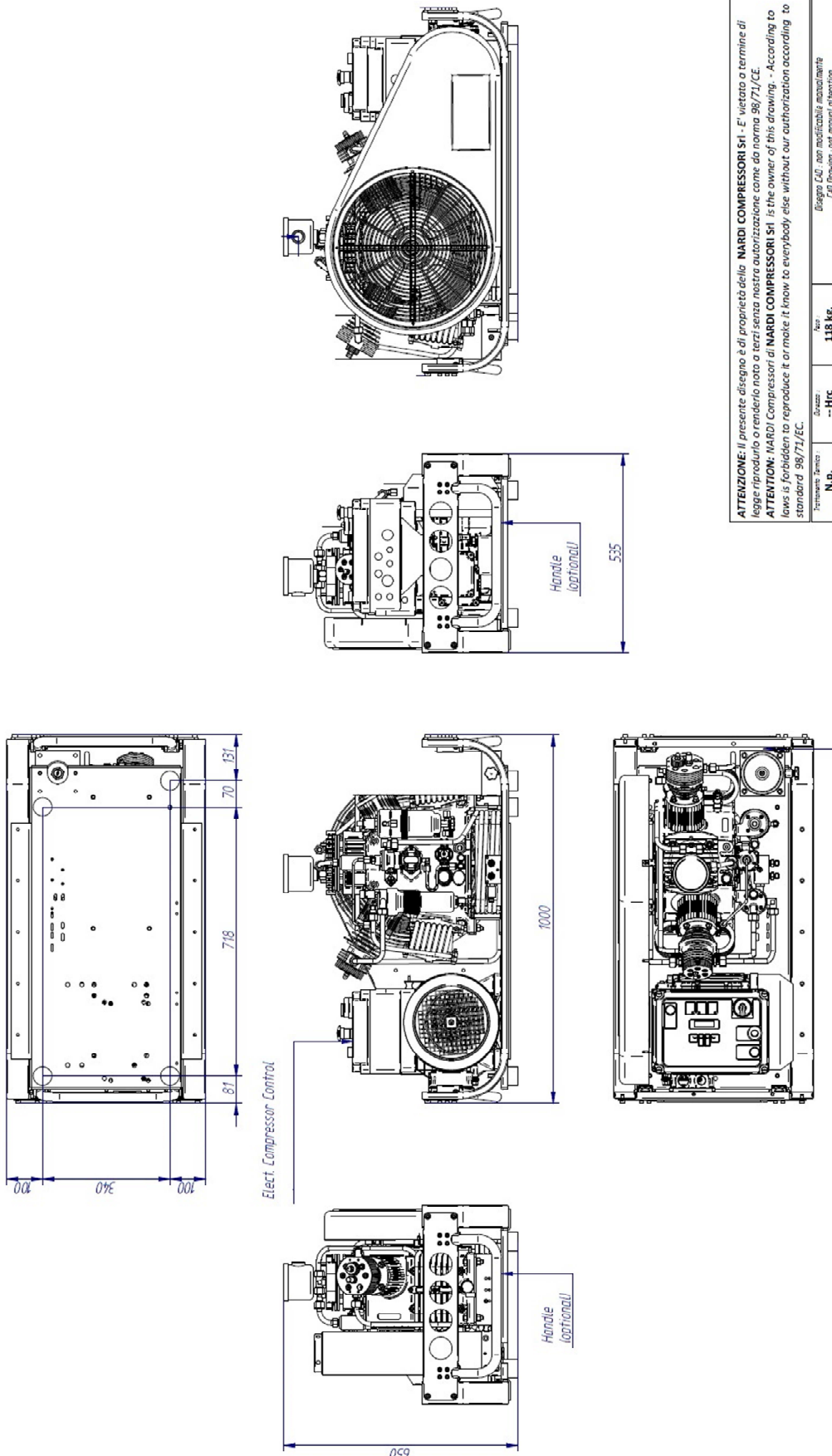
ATTENZIONE: Il presente disegno è di proprietà della NARDI COMPRESSORI Srl - È vietato a termine di legge riprodurlo o renderlo noto a terzi senza autorizzazione come da norma 98/71/CE.

ATTENTION: NARDI Compressori di NARDI COMPRESSORI Srl is the owner of this drawing. - According to laws is forbidden to reproduce it or make it know to everybody else without our authorization according to standard 98/71/EC.

Trattamento termico	N.p.	Press.	→ B.	Disegno CAD: non modificabile manualmente CAD Drawing: not manual alteration	
Disegno	→ HRC	Pericolo	→ B.		
Stampo	N.p.	Stoppaggio	N.p.	Note	
Escezza disegno a tempo	N.p.	Escezza disegno a tempo	N.p.		
BOOSTER BM - C					
BOOSTER BM					
FRAME MOD.C					
NARDI COMPRESSORI					
NARDI COMPRESSORI Srl Via Museo 100/1000248 - 10010 NARDI (CN) - ITALY Tel. +39 0172 4200248 - Fax +39 0172 4200248 E-mail: info@nardicompressori.com Web: www.nardicompressori.com					
Autore	Zeca	Revisione	IT 14	Formato	A3
1: 12,5					

Rev.	Descrizione	Verific.	Approvz.	Data
00	Primo emissione	GM	VL	22/07/2020
	Descrizione	Verific.	Approvz.	Data

Storico Revisioni - Revision History



Elect. Compressor Control

Handle optional

1000

535

650

716

131

70

81

340

100

100

SUCTION

ATTENZIONE: Il presente disegno è di proprietà della NARDI COMPRESSORI S.r.l. È vietata o termine di legge riprodurlo o renderlo noto a terzi senza autorizzazione come da norma 98/71/CE.
ATTENTION: NARDI Compressori di NARDI COMPRESSORI S.r.l. is the owner of this drawing. - According to laws is forbidden to reproduce it or make it know to everybody else without our authorization according to standard 98/71/EC.

Disegni CAD: non modificabile manualmente
CAD Drawing: not manual alteration
Yes

Spazio --Hrc	Bar 118 kg
Processo N.P.	Trattamento Superf. N.P.
Colori N.P.	Tratt. anticorrosione N.P.
Scala Disegni e Note 1:1	Scala 02

BOOSTER-E
40 BAR 7.5KW

Descrizione - Description:

ALUMINIUM FRAME

1:10 IT 14 AS

NARDI COMPRESSORI
NARDI COMPRESSORI S.r.l.
Via Marco Polo, 2 - 36076 Montebelluna (TV) - Italy
Tel. +39 0422 400111 - 470214 - 400413 Fax +39 0422 411022
E-mail: info@nardicompressori.com
Web: www.nardicompressori.com

Rev.	Descrizione - Description	Verifica - Approval	Data
00	Primo emissione	BM	22/04/2018
		MV	
		Verifica	
		Approvaz.	
		Data	

Storico Revisioni - Revision History

Codice a barre articolo / Bar-code article: