

DATA SHEET BOOSTER BM 60 BAR
FOR DRY AIR, NITROGEN AND INERT GASES



MEDIUM PRESSURE BOOSTER BM 60 BAR

TECHNICAL DATA FOR BOOSTER BLOCK:

GAS ALLOWED:	DRY AIR, NITROGEN, INERT GAS
NOMINAL PRESSURE MAX:	60 BAR
WORKING PRESSURE:	10 to 60 BAR adjustable by electronic panel
CAPACITY:	Refer Fig. 1b
NUMBER OF COMPRESSION STAGE:	1
NUMBER OF CYLINDERS:	3
INTAKE TEMPERATURE:	-10 to +40 °C
AMBIENT TEMPERATURE:	-15 to + 45 °C

Fig. 1a

PERFORMANCE DATA OUTLET FOR BOOSTER BLOCK :

TYPE\INLET BAR	unit	4	5	6	7	8	9	10	11	12
BM642807 4kW	l/min	220	275	330	385	440	500	550	610	670
	m3/h	13	16.5	20	23	26.5	30	33	36.5	40
BM642810 4kW	l/min	310	390	465	545	620	700	775	850	930
	m3/h	19	23.5	28	32.5	37	42	46.5	51	56
BM643210 5,5kW	l/min	405	505	605	710	810	910	1010	1115	1215
	m3/h	24.5	30	36.5	42.5	48.5	54.5	60.5	67	73
BM643610 7,5kW	l/min	515	640	770	900	1025	1155	1280	1410	1540
	m3/h	31	38.5	46	54	61.5	69.5	76.5	84.5	92.5
BM643613 7,5kW	l/min	660	825	990	1155	1320	1490	1650	1815	1980
	m3/h	39.5	49.5	59.5	69.5	79	89.5	99	109	119
BM653213 11kW	l/min	715	895	1075	1250	1430	1610	1790	1970	2150
	m3/h	43	53	65	75	85	96	107	118	129
BM653613 15kW	l/min	900	1130	1360	1590	1815	2040	2270	2490	2720
	m3/h	54	67.5	81.5	95.5	109	122	136	150	163

ATTENTION: INLET FLOW IS 10% MORE THAN OUTLET FLOW

Fig. 1b

TECHNICAL DATA FOR PRIME MOVER:

VOLTAGE:	230/400 (+/- 10%)
CERTIFICATION:	CE
TYPE:	THREE PHASE ELECTRIC
SPEED:	2940 1/min
ENCLOSURE:	IP54
FREQUENCY:	50Hz (60Hz)
ENERGY EFFICIENCY:	IE 3
OPTIONAL:	SOFT-START

SUCTION:

- Gas connection: G1" F
- Intake pressure monitored by pressure transmitter
- Shut-off solenoid valve

INLET PRESSURE:

- Inlet pressure between 4 Bar to 12 Bar
- Pressure transmitter able start, stop and alarms of max and min pressure of compressor
- If you need to install a pressure reducing valve, be sure it has a capacity equal to or bigger than 50% of booster flow capacity

BOOSTER BLOCK:

- Oil pump for force feed lubrication with oil filter
- Oil capacity: 3,5 lt.
- Air cooled after each stage
- Final pressure safety valve
- Fill of oil
- Final pressure gauge
- Automatic level oil alarm
- No return valve outlet

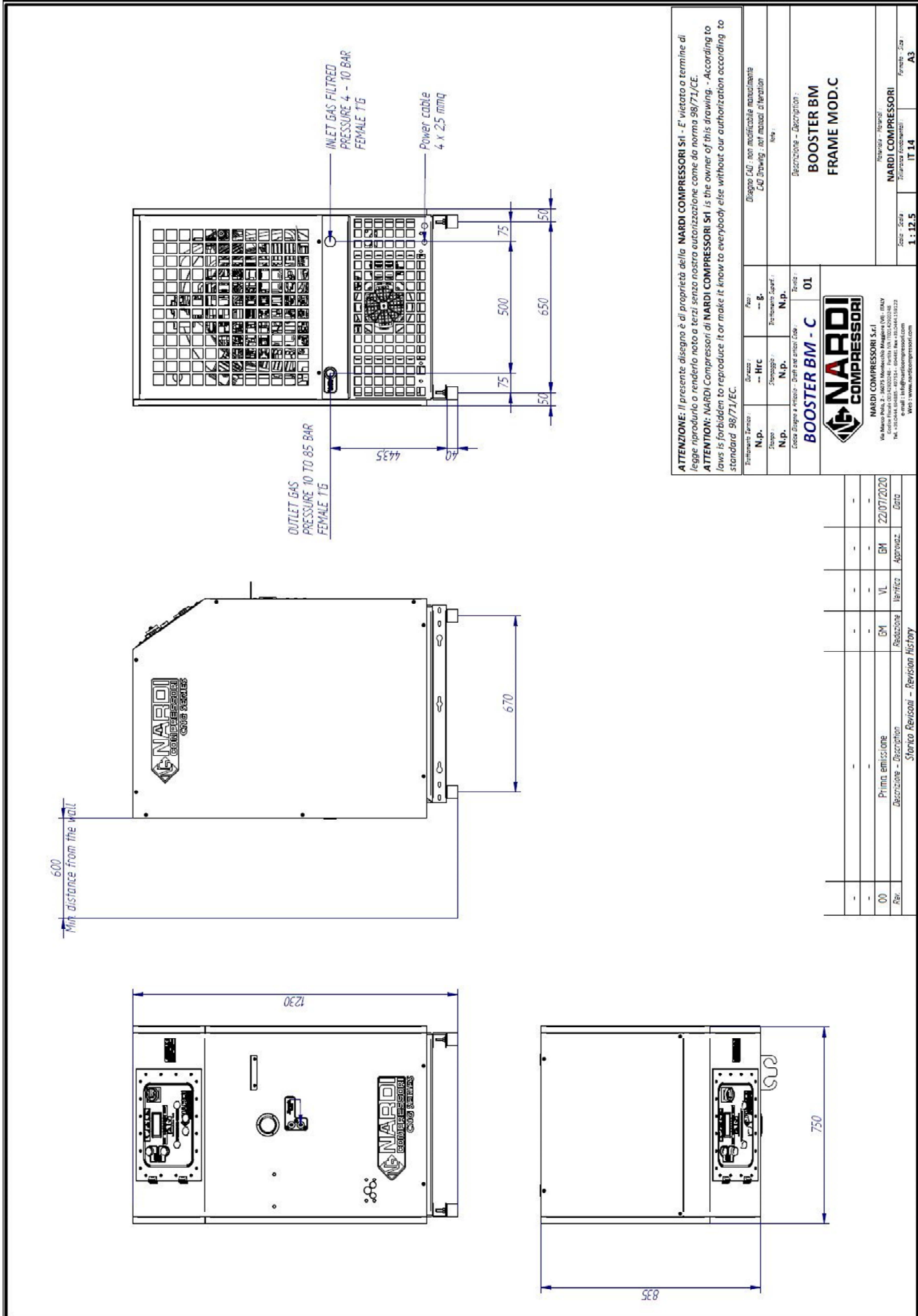
COMPRESSOR UNIT:

- Compressor with vertical rear cooling air intake and hot air outlet from the back
- Not for exposure to the sun and weather
- Frame mounted on anti-vibration system
- Frame soundproofed with sound-absorbent (model C - M)
- Control panel with integrated electronic
- Color Gray RAL 7016
- Outlet with no return valve
- Outlet connection G1" F

ELECTRONIC CONTROL PANEL:

- Easy to use and programming
- Illuminated display with hour meter, differential pressure and maximum pressure set
- Equipped with safety alarms
- AUTOMATIC mode or MANUAL, for the automated storage of gas or for a single use
- Possibility of controlling stage temperatures
- Motor protection fuses
- Ability to integrate soft-start

- START and STOP button (with green led for run)
- Alarm service when needed
- Possible setting ° C / ° F
- Possibile setting Bar, MPa, Psi
- Pressure control input and output
- Checking the oil level automatic
- Easy setting of maximum and minimum pressure of work
- Possibility of remote control
- Free voltage contact for signal the RUN status
- Free voltage contact for signal the General Alarm



ATTENZIONE: Il presente disegno è di proprietà della NARDI COMPRESSORI Srl - È vietato a termine di legge riprodurlo o renderlo noto a terzi senza autorizzazione come da norma 98/71/CE.
ATTENTION: NARDI Compressori di NARDI COMPRESSORI Srl is the owner of this drawing. - According to laws is forbidden to reproduce it or make it know to everybody else without our authorization according to standard 98/71/EC.

Trattamento Termico	N.p.	Press.	→ E.	Disegno CAD: non modificabile manualmente CAD Drawing: not manual alteration
Disegno	→ HRC	Materiali	→ E.	Note
Stampo	N.p.	Trattamenti Superf.	N.p.	
Colori	N.p.	Tracce	N.p.	
Esclusa Disegno e Versione - Draft and version Code				
BOOSTER BM - C		01		
NARDI COMPRESSORI				
NARDI COMPRESSORI Srl				
Via Manno 100/1000248 - 10010 NARDI (TV) - ITALY - 0422				
Tel. +39 0422 4200248 - Fax +39 0422 4200248				
E-mail: info@nardicompressori.com				
Web: www.nardicompressori.com				

Descrizione - Description:
**BOOSTER BM
FRAME MOD.C**

Revisioni - Revisions:
Zona - Area: **IT 14**
Formato - Size: **A3**
1: 12.5

Rev.	Descrizione - Description	Verific.	Approvz.	Data
00	Primo emissione	GM	VL	22/07/2020

Storico Revisioni - Revision History

