

DATA SHEET BOOSTER BM 40 BAR
FOR DRY AIR, NITROGEN AND INERT GASES



MEDIUM PRESSURE BOOSTER BM 40 BAR

TECHNICAL DATA FOR BOOSTER BLOCK:

GAS ALLOWED:	DRY AIR, NITROGEN, INERT GAS
NOMINAL PRESSURE MAX:	40 BAR
WORKING PRESSURE:	10 to 40 BAR adjustable by electronic panel
CAPACITY:	Refer Fig. 1b
NUMBER OF COMPRESSION STAGE:	1
NUMBER OF CYLINDERS:	3
INTAKE TEMPERATURE:	-10 to +40 °C
AMBIENT TEMPERATURE:	-15 to + 45 °C

Fig. 1a

PERFORMANCE DATA OUTLET FOR BOOSTER BLOCK :

TYPE/INLET BAR	unit	4	5	6	7	8	9	10	11	12
BM442807 4kW	l/min	220	275	330	385	440	500	550	610	670
	m3/h	13	16.5	20	23	26.5	30	33	36.5	40
BM442810 4kW	l/min	310	390	465	545	620	700	775	850	930
	m3/h	19	23.5	28	32.5	37	42	46.5	51	56
BM443210 5,5kW	l/min	405	505	605	710	810	910	1010	1115	1215
	m3/h	24.5	30	36.5	42.5	48.5	54.5	60.5	67	73
BM443610 5,5kW	l/min	515	640	770	900	1025	1155	1280	1410	1540
	m3/h	31	38.5	46	54	61.5	69.5	76.5	84.5	92.5
BM443613 7,5kW	l/min	660	825	990	1155	1320	1490	1650	1815	1980
	m3/h	39.5	49.5	59.5	69.5	79	89.5	99	109	119
BM444513 7,5kW	l/min	800	1000	1200	1400	1600	1800	2000	2200	2400
	m3/h	48	60	72	84	96	108	120	132	144
BM453613 11kW	l/min	900	1130	1360	1590	1815	2040	2270	2490	2720
	m3/h	54	67.5	81.5	95.5	109	122	136	150	163
BM454510 18,5kW	l/min	1100	1380	1650	1930	2200	2480	2755	3030	3300
	m3/h	66	83	99	116	132	149	165	181	198
BM454513 18,5kW	l/min	1420	1770	2125	2480	2830	3190	3540	3895	4250
	m3/h	85	106	127.5	149	170	191	212	233	255
BM454516 18,5kW	l/min	1730	2165	2600	3030	3460	3895	4330	4760	5190
	m3/h	104	130	156	182	207	234	260	285	311

Fig. 1b

ATTENTION: INLET FLOW IS 10% MORE THAN OUTLET FLOW

TECHNICAL DATA FOR PRIME MOVER:

VOLTAGE:	230/400 (+/- 10%)
CERTIFICATION:	CE
TYPE:	THREE PHASE ELECTRIC
SPEED:	2940 1/min
ENCLOSURE:	IP54
FREQUENCY:	50Hz (60Hz)
ENERGY EFFICIENCY:	IE 3
OPTIONAL:	SOFT-START

SUCTION:

- Gas connection: G1" F
- Intake pressure monitored by pressure transmitter
- Shut-off solenoid valve

INLET PRESSURE:

- Inlet pressure between 4 Bar to 12 Bar
- Pressure transmitter able start, stop and alarms of max and min pressure of compressor
- If you need to install a pressure reducing valve, be sure it has a capacity equal to or bigger than 50% of booster flow capacity

BOOSTER BLOCK:

- Oil pump for force feed lubrication with oil filter
- Oil capacity: 3,5 lt.
- Air cooled after each stage
- Final pressure safety valve
- Fill of oil
- Final pressure gauge
- Automatic level oil alarm
- No return valve outlet

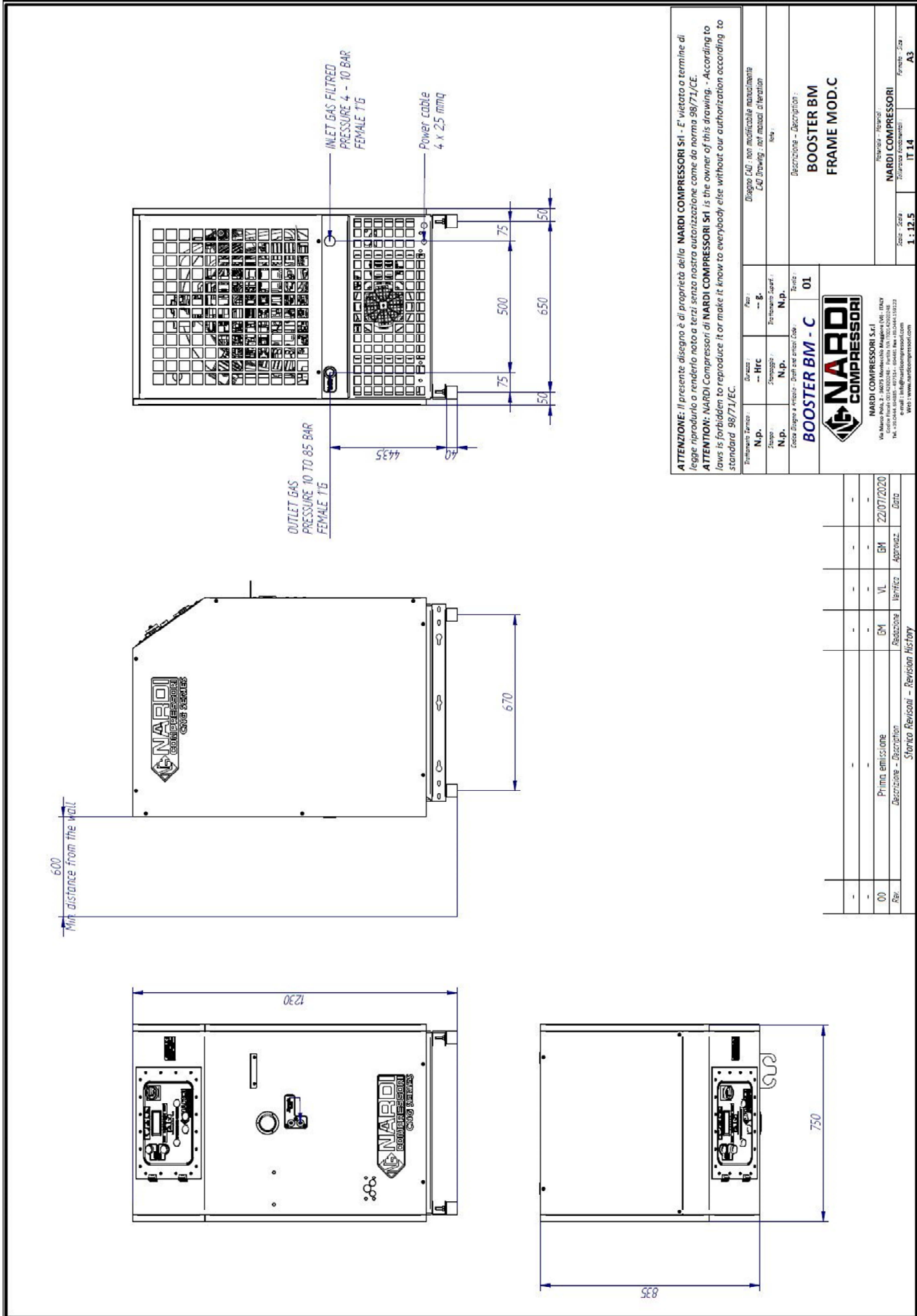
COMPRESSOR UNIT:

- Compressor with vertical rear cooling air intake and hot air outlet from the back
- Not for exposure to the sun and weather
- Frame mounted on anti-vibration system
- Frame soundproofed with sound-absorbent (model C - M)
- Control panel with integrated electronic
- Color Gray RAL 7016
- Outlet with no return valve
- Outlet connection G1" F

ELECTRONIC CONTROL PANEL:

- Easy to use and programming
- Illuminated display with hour meter, differential pressure and maximum pressure set
- Equipped with safety alarms
- AUTOMATIC mode or MANUAL, for the automated storage of gas or for a single use
- Possibility of controlling stage temperatures
- Motor protection fuses
- Ability to integrate soft-start

- START and STOP button (with green led for run)
- Alarm service when needed
- Possible setting ° C / ° F
- Possibile setting Bar, MPa, Psi
- Pressure control input and output
- Checking the oil level automatic
- Easy setting of maximum and minimum pressure of work
- Possibility of remote control
- Free voltage contact for signal the RUN status
- Free voltage contact for signal the General Alarm



ATTENZIONE: Il presente disegno è di proprietà della NARDI COMPRESSORI Srl - È vietato a termine di legge riprodurlo o renderlo noto a terzi senza autorizzazione come da norma 98/71/CE.

ATTENTION: NARDI Compresori di NARDI COMPRESSORI Srl is the owner of this drawing. - According to laws is forbidden to reproduce it or make it know to everybody else without our authorization according to standard 98/71/EC.

Trattamento Termico	N.p.	Press.	→ B.	Disegno CAD: non modificabile manualmente CAD Drawing: not manual alteration
Disegno	→ HRC	Perforazione	Guarn. / Note	
Stampo	N.p.	Stampaggio	N.p.	
Esce	Disegno e Foto	Disegnare e Foto	Disegnare e Foto	
BOOSTER BM - C		BOOSTER BM		
01		FRAME MOD.C		
NARDI COMPRESSORI				
NARDI COMPRESSORI Srl				
Via Manno 100 0202248 - Tel. 0745 10042000248				
Fax 0745 10042000248 - Email: info@nardicompressori.com				
Web: www.nardicompressori.com				

Rev.	Descrizione	Verific.	Approvz.	Data
00	Primo emissione	GM	VL	22/07/2020
	Descrizione	Verific.	Approvz.	Data